

Parent Information

Social Media and Gaming

We have had a few bullying incidents to deal with involving children being unkind to each other on gaming consoles and social media sites. Can I please remind you that children can talk to each other and strangers on games consoles. Also Facebook is a social networking site for children over the age of 13 years. To prevent bullying and your child communicating with inappropriate adults please monitor your child's use of the computer carefully. If you would like any advice on this please don't hesitate to contact Ann Jordan through the school office.



School Dinners



I am really pleased with the vast majority of pupils who are benefiting from free school meals offered to all pupils in

Newham. I will be asking Ann to contact the few families who have not taken up this opportunity yet. If your child does have a packed lunch please remember healthy options only such as: savoury sandwiches, fruit, yoghurt, cucumber, carrot sticks, cheese and crackers. Crisps are allowed only on Friday. Fizzy drinks,

chocolate and biscuits are not allowed any day of the week.



Parent Support

Being a parent is the hardest job in the world. Hallsville is pleased to be able to offer positive parenting sessions to support our parents. This will be run by Ann our Home School Liaison Officer. If you are interested in attending please let Ann know in the office.



Lost Property

We have collected a lot of lost property since September. At Parents' Evening we will put it out for parents to check through. Please check the lost property box if your child has lost any clothing.



Party Bags

It has been brought to my attention that party bags are creeping back into Hallsville. During these difficult times I think it is too expensive to buy party bags for every child in the class. As a school we have decided that a small

chocolate or sweet from a box of chocolates or sweets would be better.



Again, I would like to say thank you to all of our parents and carers for your valued support.

Lorraine Johnson

(Head of School)

Parent Questionnaires

Thank you to all parents who completed the questionnaires (114). The response was extremely positive. We value all of your suggestions. Here is a summary of the outcomes:

- My child enjoys school 98%
- My child is safe at school 99%
- I am kept well informed of my child's progress 98%
- My child is making enough progress at Hallsville 100%
- Hallsville helps me to support my child's learning 99%
- Hallsville helps my child to have a healthy lifestyle 100%
- Hallsville meets my particular child's needs 98%
- Hallsville School prepares my child to be successful at secondary school 100%
- Hallsville deals effectively with unacceptable behaviour 97%
- Hallsville takes account of my suggestions and concerns 97%
- Hallsville is led and managed effectively 95%
- Overall I am happy with my child's experience at Hallsville 99%

As a school we value the suggestions and views of parents. If you are interested in joining the PTA parent group please speak to Ann Jordan in the office.

Hallsville
Primary School

The Hallsville NEWSLETTER

Issue 2—November 2016

In 2016 our Key Stage 2 SATs results were, despite the new assessments, the best ever. We are in the top ten of Newham Schools and Newham is one of the most successful Boroughs in the country. I would like to extend a large thank you to: our parents, the dedication of our staff who work incredibly hard year on year and most importantly the children of Hallsville.

Ms Keri Edge—Executive Head Teacher



Notices

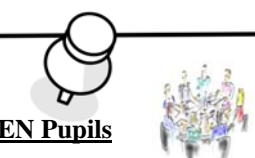
Teachers Training

Friday 11th November.
Friday 18th November.
School will be closed for pupils.



Parents of SEN Pupils

SEN Meeting:
Thursday 1st December at 9:00am.
Parents of Special Needs children are invited to meet some specialists.



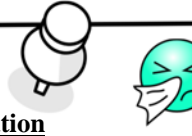
School Nurse Parent Workshop

Our new school nurse (Wendy) will be holding a parent workshop at 9am on the 10th November. Please speak to Ann Jordan for details.



Flu Immunisation

This year the Department of Health has broadened the opportunity for children have a flu immunisation at school. The immunisation will be offered to children in Years 1, 2 & 3 on the 13th December. Parental consent forms will be given out soon.



Friendship Friday

Children will be asked to dress in yellow on friendship Friday 25th November. Please make a 50p donation which will go to Children In Need.



Curriculum

Curriculum Topics for Term 2

This term we will be learning all about these exciting new units of work:

- Year 1-** Ourselves
- Year 2-** Journeys
- Year 3-** Fire and Water
- Year 4-** Anglo- Saxons and Scots
- Year 5-** South America
- Year 6-** Electricity



Please support your child's learning in school by finding out all about it by taking your child to a museum or library.
For further details on what your child will be learning this term please look at the school website under the heading- 'Our Learning'.

Home Reading



Reading is extremely important for every child in our school. Please make sure your child has some special reading time at least 5 times a week and completes their exciting new Reading Journal. Regular daily practise of reading absolutely makes a difference!

Please make time to not only hear your child read but to read to them. I find the last 5-10 minutes before lights go out to be the best time.



Parents Evening

Parents Evening will be on Thursday 17th November 2016. Parents evening will start at 2:30 so please make sure you collect your child at 2:15pm on this day.

I will be expecting all parents to make the effort to meet their child's new teacher.

School dinner food tasting, refreshments and stalls will be available as usual in the Key Stage 1 hall.

Children Special Dates Term 2



7th November-Y6-London Zoo

8th November -Y3- Dogs' Trust visit at school

9th November -Y4- Dogs' Trust visit at school

10th November-Y4- History Off the Page :Anglo-Saxons

14th November Anti-Bullying Week begins

14th November Anti-Bullying drama performance and workshops with Caboodle

16th November -Y5- Dogs' Trust visit at school

24th November-Y1-visiting The National Portrait Gallery

28th November -Y6- Dogs' Trust visit at school

2nd December-Y6- Docklands Museum

6th December-Nursery /Reception- Dogs' Trust visit at school

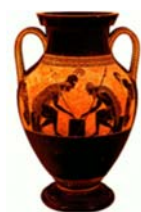
9th December-NSPCC visiting school



12th December-Y6-Pantomime at Stratford

13th December-Y4- Pantomime at Stratford

15th December-Y5- Pantomime at Stratford



Special Dates Term 3

4th January- Y6- Oliver Twist

5th January- Y3- History Off the Page: Romans

11th January- Y5- History Off the Page: Greeks

16th January- Y6- Houses of Parliament

20th January -Y6-At Stratford Theatre



23rd January- Y5- British Museum

Parent Information

Attendance and Punctuality

Last year our attendance was 95.9% an increase on the previous year. The school target this year is 96%. I would like to congratulate all parents for the effort made to ensure their children have good attendance. Unfortunately, there are still a significant number of children who are not attending school often enough. Ann (Home School Liaison Officer) will continue to work closely with these families to ensure their children have the same life opportunities as other children in the school. In order for your child to be happy in school, have good friendships and reach their full potential they must attend school regularly. Home visits and meetings will be arranged with those families who have attendance issues.

A number of families are frequently late for school. It is really unsettling for your child to arrive at school after the class has started. I have asked Ann to meet with families who are persistently late so that the school can support you in improving the situation for your child.



Nursery and Reception Workshops

10am Tuesday 15th November-Parent & Toddler Group

10am Thursday 17th November-Parent & Toddler Group

10am Tuesday 22nd November-Parent & Toddler Group

10am Thursday 24th November-Parent & Toddler Group

10am Tuesday 29th November-Parent & Toddler Group

9:15am Thursday 1st December-Nursery Parent & Toddler Group

9:15am and 12:45pm Thursday 24th November-Nursery Workshop

9:15am Monday 28th November-Reception Parent Workshop



Christmas Dates

Tuesday 13th December Nursery-Stay and be Festive.

Thursday 15th December Christmas Concerts KS1 at 9:30am for parents of the Reception classes and Ms Walton's class.

Friday 16th December Christmas Concerts KS1 at 9:30am for parents of the Year 2 classes and Ms Chandler's class.

Thursday 15th December Christmas Concerts Years 3 and 4 parents at 11:30am.

Friday 16th December Christmas Concerts Years 5 and 6 parents at 11:30am.

Thursday 15th December Children's Christmas Dinner.

Christmas parties will be held 19th or 20th December. Class teachers will decide and let you know.

Christmas Jumper Day: Friday 16th December.

Christmas Holidays

Christmas Holidays start Wednesday 21st December 2016 until Tuesday 3rd January 2017. Children must return to school on Wednesday 4th January.

Harvest Festival

Thank you to all those families who donated to our Harvest Festival this year. The produce was gratefully received by Community Links who will arrange the donation to the homeless.

